

Minutes

Supportive Housing Subcommittee Meeting Minutes

December 7, 2016

5:00 – 6:30 p.m.

1 Civic Plaza, 9th Floor Conference Room

Type of meeting: 9th meeting: Joint Supportive Housing and Community Supports Subcommittee Meeting to discuss the Behavioral Health Initiative project processes and updates.

Members Present: Robert Baade, Constance Banuelos, Ricki Bloom, Sister Agnes Kaczmarek, Lisa Huval, Jenifer Sena

Members Excused: Michelle Valencia-Stark

Staff Person Present: Cathy Imburgia and Michael Robertson

Technical Advisors Present: Laine Snow for K. Meador

Meeting Observers: Katrina Hotrum (presenter)

Call to Order

Meeting called to order at 5:07 p.m. by Robert Baade, Supportive Housing Subcommittee chair. The two subcommittees met jointly on this occasion with Robert facilitating.

Discussion to Approve Agenda

Agenda was approved by acclamation.

Discussion to Approve Minutes

Minutes from the November meeting need to be revised to include the attendance of the Community Supports Subcommittee members. Cathy will do the update for Nicole to distribute.

Key Items of Discussion

Old Business

Katrina Hotrum provided a presentation to address the questions that were raised at the last meeting regarding the Behavior Health Initiative. The questions addressed included:

- a. Goals, structure, process, staffing, and program management (present and projected)
- b. Report on GRT income, projects approved, committed costs thus far
- c. Relation of BHI to the larger system, including mil levy negotiations and other city/county work
- d. Overview of RFP development and review processes
- e. Feedback on proposed project proposal template

Included in the minutes is Attachment 1, a draft document prepared as part of Katrina's presentation. On behalf of the subcommittee members, both chairs expressed appreciation for the thorough update.

New Business

- It was noted that the information presented will be further addressed at an upcoming re-orientation meeting, for subcommittee members. The re-orientation meeting is scheduled for January 26, 2017, prior to the tentatively scheduled ABCGC meeting. Invitations will be sent as soon as the location is secured. *Note: The invite/agenda was emailed on December 20 by dmmartinez@bernco.gov*
- It was also noted that the draft Behavioral Health overview document, Attachment 1, will be updated and expanded to a 4-page document. Katrina explained that the plan is to continue providing monthly communication updates using the format established in the draft document.
- Additionally, it was agreed that every effort will be made to distribute materials for review, including proposals, at least one-week prior to the meeting.
- After reviewing the list of anticipated upcoming projects, both Subcommittees agreed it is best to meet separately in the future.
- Future projects for the Supportive Housing Subcommittee include the Single Site Housing project. The project has been on hold while additional information is being gathered.
- Potential future projects for the Community Supports Subcommittee include: Crisis Respite Services, Intermediate Levels of Care, Forensic Assertive Community Treatment, Courts and Criminal Justice Improvements, Medicaid Accessibility and Outreach, Substance Abuse and Outpatient Treatment Services, and Peer Support/Drop-in Services.
- The Subcommittees met separately to discuss next meeting schedules and priority projects.
- The next Supportive Housing Subcommittee meeting will take place after the re-orientation meeting and is to include answering questions that will be used in developing the Single Site Supportive Housing recommendation proposal. In preparation for the meeting, Cathy is to distribute the questions at least 1-week prior to the meeting.
- The next Community Supports meeting will be held January 10 and will address information pertaining to peer supports/drop-in services.

Public Comment

None

Next Meeting and Adjourn

Meeting adjourned at approximately 6:30 p.m.

Next meeting: February 2, 2017 at 5:00 – 6:30 p.m., at 1 Civic Plaza 9th Floor Committee Room

DRAFT

December 2016

Behavioral Health Initiative

Improving behavioral health outcomes in our community

Overview

Bernalillo County and the City of Albuquerque are committed to improving behavioral health outcomes. Through the efforts of a joint governing structure, called the **Albuquerque Bernalillo County Government Commission (ABCGC)**, the county and the city are strategically making decisions to leverage resources with recommendations that include community and stakeholder input.

Following is a description of the structure including the governing body of the city-county effort and the role and membership makeup of each group that comprise the structure.

ABCGC

The joint city-county commission overseeing the community's Behavioral Health Initiative is called the **Albuquerque Bernalillo County Government Commission**. The ABCGC membership includes City Council and County Commissioner representation, addresses matters that impact both municipalities and is where proposed project recommendations are vetted for final approval.

Structure

The diagram in Figure 1 portrays the oversight commission and committee structure of the joint City of Albuquerque/Bernalillo County Behavioral Health Initiative. Following are descriptions of each working advisory group.

Small Working Group

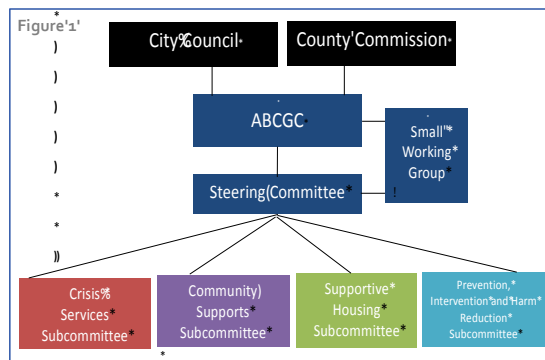
The Small Working Group guides implementation of the Behavioral Health Initiative including coordinating project assignments to the Subcommittees; staffing the Subcommittees; coordinating Steering Committee meetings; and coordinating project proposals and recommendations for consideration by the ABCGC. Membership includes city, county and provider representatives.

Steering Committee

The Steering Committee shares project information across the Subcommittees to enhance communications and ensure a unified and inclusive process in developing proposal recommendations for consideration by the ABCGC. Steering Committee membership includes the Small Working Group and Subcommittee chairs and co-chairs.

Subcommittees

Using outcomes from recent studies and community dialogues that prioritize proposed projects and target audiences, the following four priority areas and working subcommittees were identified: (1) **Crisis Services**; (2) **Community Supports**; (3) **Supportive Housing**; (4) **Prevention, Intervention and Harm Reduction**. The membership consists of voting members representing the community, technical advisors and staff who are members of the Small Working Group.



QUESTIONS & ANSWERS

Q: What are the Behavioral Health Initiative goals, process, staffing, and program management (present and projected)?

A: A position is posted for a Behavioral Health Director with a goal to have the position filled in early 2017. Additionally, an RFP has been issued for a behavioral health advisor to help put structure in place, train and mentor staff, work on future goals/direction, and braiding funding and resources. Bernalillo County is realigning internal staff resources to assist in Behavioral Health efforts; and, once that is complete, the county will have a better understanding of any needed additional resources.

Q: From the GRT income, what projects have been approved and what costs have committed thus far?

A: Figures 2 and 3 portray approved projects and the breakdown funded through the GRT, with \$8,036,553 committed thus far.

Q: How does the work of the Behavioral Health Initiative relate to the larger system, i.e. mil levy negotiations and other city/county work?

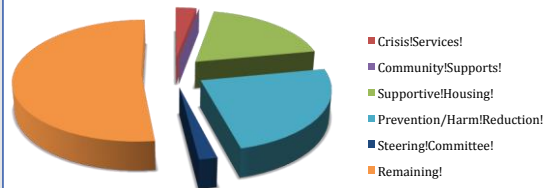
A: The goal of the Behavioral Health Initiative is to build a system of care that leverages all existing resources, fills current gaps in service delivery and provides linkages throughout an ideal continuum of care. Negotiations between the county and UNMH on the mil levy are continuing with opportunity for public comment anticipated in early 2017. Discussions in the negotiations are addressing enhanced services to further leverage existing resources. And in collaboration with the Steering Committee, the Small Working Group is currently in process of developing a visual that depicts linkages and gaps in our existing system. Figure 4 on the next page represents the working draft visual.

Approved Projects and GRT Allocations

Figure 2

Project Name Subcommittee	Annual Funding Source
Community Connections	
Jail Reentry Diversion	\$1,300,000 – BC
Supportive Housing	\$503,000 – CABQ
UNM ISR Contract	
Steering Committee	\$246,553 – BC
Youth Transitional Living	
Supportive Housing	\$650,000 – BC
Reduction of Adverse Childhood Experiences	
Prevention/Harm Reduction	\$3,000,000 – BC
Community Engagement Teams	
Prevention/Harm Reduction	\$1,000,000 – BC
Behavioral Health Advisor	
Steering Committee	\$140,000 – BC
Community Connections	
Scattered Supportive Housing	\$1,200,000 – BC
Supportive Housing	
Mobile Crisis Teams	\$500,000 – BC
Crisis Services	\$700,000 – CABQ

Figure 3



QUESTIONS & ANSWERS

Q: How have the proposed projects been identified?

A: The projects listed in Figure 5 have been identified through outcomes from recent studies and community dialogues that prioritize gaps in services. The studies where these gaps are identified include the CPI report, City/County Task Force and the Creating Community Solutions Dialogues. Priority audiences defined for the first phase of implementation are high utilizers of the system—including those who experience frequent mental health related emergency room visits in a 12-month period and/or have experienced frequent encounters with law enforcement and the criminal justice system.

Q: Can subcommittee members develop RFPs and be involved on RFP evaluation teams?

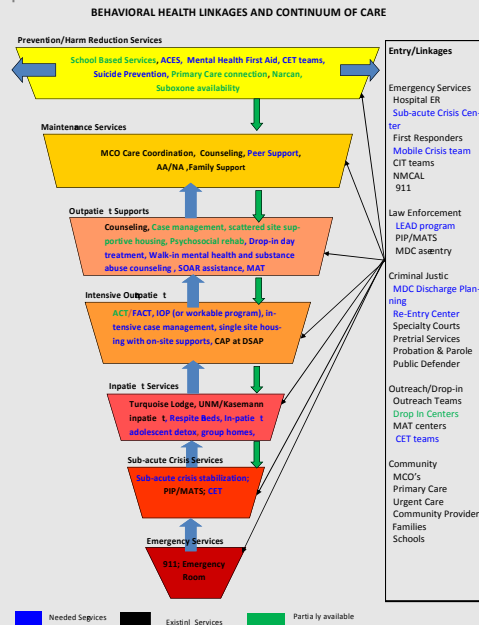
A: Development of any RFP is a formal and legal process that awarding entities undertake to solicit for services. RFPs are developed by dedicated staff to ensure adherence to procurement law and elimination of conflict of interest. The RFPs for this initiative rely heavily on the details within the project proposals to define the scope of work. While subcommittee members cannot be directly involved in writing RFPs, they form the RFP's direction through the review and editing of the project proposals. Provisions have been granted for the participation of two subcommittee members on an evaluation team.

Q: Why do the more recent project proposals for review look different?

A: The technical proposals identify what work is to be done, explain why this work needs to be done, and is used to persuade the reader that the proposers are qualified for the work and have a plausible plan and approach to seek the resources needed to complete the task within the proposed time and cost. To provide consistency in our work, a proposal template was recently introduced. Your comments are welcomed.

Behavioral Health Continuum of Care

Figure 4



Subcommittee Goals and Projects

Figure 5

Crisis Services Subcommittee	Community Supports Subcommittee	Supportive Housing Subcommittee	Prevention, Intervention and Harm Reduction Subcommittee
<p>Improve response for individuals in psychiatric or substance abuse crisis and diversion to appropriate service.</p>	<p>Improve services in the community that will stabilize individuals and prevent crisis.</p>	<p>Ensure individuals with behavioral health needs are stably housed.</p>	<p>Prevent substance abuse and severe psychiatric distress through early identification and treatment.</p>
<p>Projects</p> <ul style="list-style-type: none"> Crisis Call Center Mobile Crisis Teams Crisis Stabilization and Response Center Law Enforcement Response Triage Intervention Trained Unit Resource and Reentry Center 	<p>Projects</p> <ul style="list-style-type: none"> Crisis Respite Services Intermediate Levels of Care Forensic Assertive Community Treatment Courts and Criminal Justice Improvements Medicaid Accessibility and Outreach Substance Abuse and Outreach Treatment Services Peer Support/Drop In Services 	<p>Projects</p> <ul style="list-style-type: none"> Community Connections Jail Reentry Diversion Community Connections Scattered Site Supportive Housing Youth Transitional Living Single Site Supportive Housing 	<p>Projects</p> <ul style="list-style-type: none"> Community Engagement Teams (CET) School Based Substance Abuse Intervention Early Intervention/Early Prevention for Children (0-13 years) Mitigating Adverse Childhood Experiences Law Enforcement Assisted Diversion (LEAD) Mental Health Awareness, Education and Training